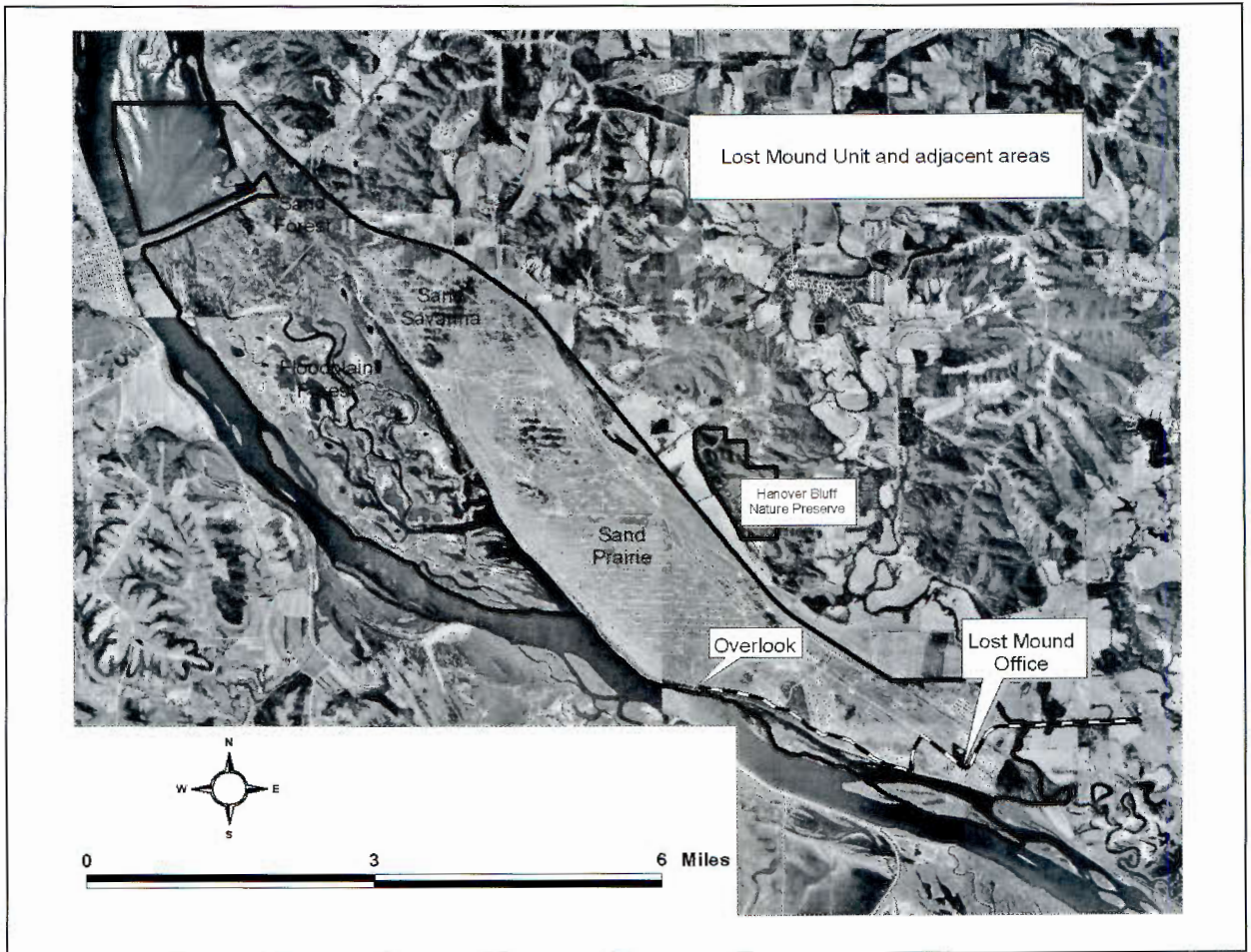


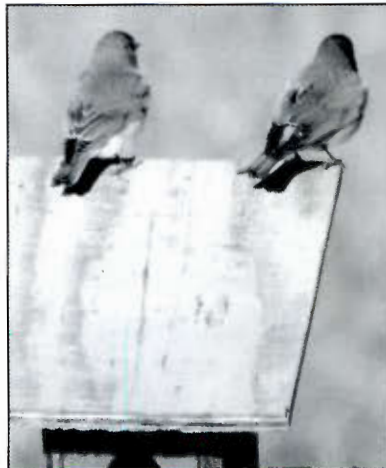
## Lost Mound Map



tracks, and pass the old fire station and a dense jack pine grove on your right. Ascend a small hill, turn right,

### If you go...

Be aware that on the refuge uplands only the 3-mile portion of river road and the overlook are open for public access (dashed line on map). Non-refuge roads on the south portion of former SAD are also open but be sure not to leave the roads. The bottomlands west of and including Crooked Slough are open but only accessible by boat. The Artful Lodger in Hanover is the closest place to stay and is well worth it. A variety of good restaurants and historical attractions can be found in Galena about 26 miles to the north. Fast food and gas is available in Savanna (and Galena). For motorcycle enthusiasts (few of



*Eastern Bluebirds are common at Lost Mound. A trail of 31 nest boxes is monitored by volunteers from Jo Daviess County Natural Area Guardians.*

which will be reading this), a stop at Poopy's in Savanna is required. The nearest disc golf courses are located in Savanna, Mt Carroll, and Fulton. In winter, ski the bluff at Chestnut Mountain 15 miles to the north. Other bird-rich sites nearby include (from north to south) Tapley Woods, Witkowsky Wildlife Area, Hanover Bluff Nature Preserve, Mississippi Palisades State Park (IBA #31), Ayers Sand Prairie Nature Preserve, Spring Lake, Sloan Marsh and Thomson Prairie of the Upper Miss Refuge (IBA #48), Lock & Dam 13, and Fulton Marsh.

– Dan Wenny, Ed Anderson  
and Randy Nyboer  
Lost Mound Field Station  
3159 Crim Drive  
Savanna, IL 61074  
dwenny@inhs.uiuc.edu