

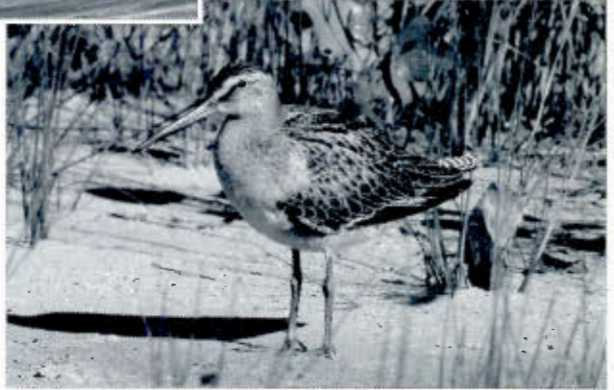
Sabine's Gull. Carlyle Lake, Clinton County. 25 September 2010.
Photo by Dan Kassebaum.



Sabine's Gull in flight. Carlyle Lake, Clinton County. 18 September 2010.
Photo by Allen Smith.



Short-billed Dowitcher. Montrose, Chicago, Cook County. 5 September 2010.
Photo by Craig Thayer.



Red-necked Phalaropes. Carlyle Lake, Clinton County. 18 September 2010.
Photo by Allen Smith.



Short-billed Dowitcher

EA: 2 Jul(5), RendL (DMK); 7 Jul, *Monroe* (KAM), 8 Jul (2), *Montrose* (SGS:ph); 9 Jul (5 alt plum), *Kankakee* (JBH); 9 Jul (6), LCal (WJM, APS). MC: 20, *Emiquon* (Wilder Tract), 27 Jul (KBR); 20, *BigL* (Brown Co), 6 Sep (EtG). LD: 1 Oct (2), *PeacockM* (Bolingbrook, Will Co) (CAT); 19 Sep, LCal (WJM, APS).

Long-billed Dowitcher

EA: 22 Jul, *Emiquon* (wilder Tract) (KBR); 28 Aug, *PeacockM* (Bolingbrook, Will Co) (DFS). MC: 10, *Fulton*, 6 Nov (TH). LD: 7 Nov, *RollinsSav* (MMC).

Wilson's Snipe

EA: 1 Aug, *Emiquon* (TH); 5 Aug, *Volo Bog SNA* (Lake Co) (EtG); 11 Aug, *Kankakee* (JBH). MC: 108, *ClintonL*, 19 Nov (MEF); 30, *Nyrgren Wetlands* (*Winnebago* Co), 16 Oct (JIE).

American Woodcock

EA: 30 Sep, *Chi* (Grant Pk) (DEW); 1 Oct, *Milford* (Iroquois Co) (ESc); 2 Oct, *Montrose* (RLS). MC: 4, *Edwards*, 20 Nov (RES). LD: 24 Nov, *Chi* (GAW).

Wilson's Phalarope

EA: 22 Jul, *Emiquon* (KBR). MC: 6, *Emiquon*, 15 Aug (MJW); 4, *Emiquon* (Wilder Tract), 27 Jul (KBR). LD: 17 Sep, *White* (MSS, CLH).

Red-necked Phalarope

EA: 18 Aug (2); *El Paso* (Woodford Co) (MJW, TH, DH). MC: 15, *BigL* (*Brown* Co), 2 Sep (KBR); 12, *CarlL-C.*, 13 Sep (KAM); 5, *Emiquon* (ThompsonL, 2 Sep (KBR). LD: 25 Sep, *CarlL-C* (CAT, TLK).

Red Phalarope

EA: 18 Aug, *Monroe* (C&PD).

Black-legged Kittiwake

20 Nov (juv), *Gillson Pk* (Cook Co) (JIE).

Sabine's Gull

EA: 6 Sep (juv) & another juv, *Chau*, 16 Sep (KBR), w/ one there 19 Sep, (KBR, TW). MC: 2 (juvs), 24-26 Sep (1 present 17-27 Sep), *CarlL-C* (DMK, m.ob). LD: 25 Oct, *CarlL-C* (KAM).

Others: Lower *Peorial* (*Peoria* Co) (juv feeding on water like a phalarope), 17 Sep, then 2 there walking sandy edge eating maggots, 18 Sep, (KBR); *Emiquon* (ThompsonL), 19 Sep (KBR, TW).

Bonaparte's Gull

EA: 31 Jul, LCal (AFS, WJM). MC: 5000, *CarlL-C.*, 7-8 Nov (KAM).

Laughing Gull

EA: 27 Jul, *Fulton* (KBR); 28-29 Aug, *CarlL-C* (DMK). LD: 11 Sep, *Monroe* (MSS). Only reports received.

Franklin's Gull

EA: 4 Sep (2), *CarlL-C* (DMK). MC: 125, *ChainL* (Mason Co), 29 Oct (KBR); 90, *Sang*, 28 Oct (HDB); 47, *JP*, 27 Oct (PRC); 20, *CarlL-C.*, 29 Oct (DMK). LD: 28 Nov, *GreeneVal* (REF, KDF); 24 Nov, *ClintonL* (MEF); 15 Nov (3), *JP* (DFS); 14 Nov, *StoreyL* (*Knox* Co) (PR).

Ring-billed Gull

MC: 6000, *CarlL-C.*, 8-10 Oct, 26-27 Nov (DMK); 1763, *ClintonL*, 12 Nov (MEF); 1500, *WinthropH*, 21 Aug (EWW).

CALIFORNIA GULL

EA: 22 Sep (1st), *Fox R Shores FP* (*Kane* Co.) (EES); 25 Sep (ad.), *WinthropH* (AFS, ASI, EWW:ph); 25 Sep (2nd), *Sang*, (HDB); 11 Oct (2nd), *CarlL-C* (DMK).

Herring Gull

MC: 3200, *WinthropH*, 29 Oct (CAT, TLK).

Thayer's Gull

EA: 10 Oct, *WinthropH* (EtG). MC: 6 (5 ad., 1 1st), *WinthropH*, 27 Nov (EtG).