

Rough-legged Hawk

E.A.: 7 Oct., MTNWR (HW); 26 Oct., CBG (LB); 30 Oct. (dark phase), Galesburg (MB). M.C.: 4, (1 dark ph.), CBG, 14 Nov. (WS et al.); 3, Mahomet, 16 Nov. (EC).

Golden Eagle

E.A.: 16 Oct., c. Winnebago Co. (JDo); 4 Nov. (ad.), Spfld (DB).

American Kestrel

M.C.: 10, De Witt Co, 29 Nov. (RP).

Merlin

E.A.: 31 Aug., Chi (KH); 10 Sep., Urbana (RC). M.C.: 8, Wauk, 18 Sep. (DJ). L.D., Decatur ((MAL); 14 Nov., Winthrop Harbor (JL); 3 Nov., Decatur. Others: 14 others from northern Illinois and 11 others from central Illinois reported.

bird dog—photo).

Virginia Rail

E.A.: 29 Sep., Sang.L (DB). L.D.: 10 Oct., Sang.L (DB).

Sora

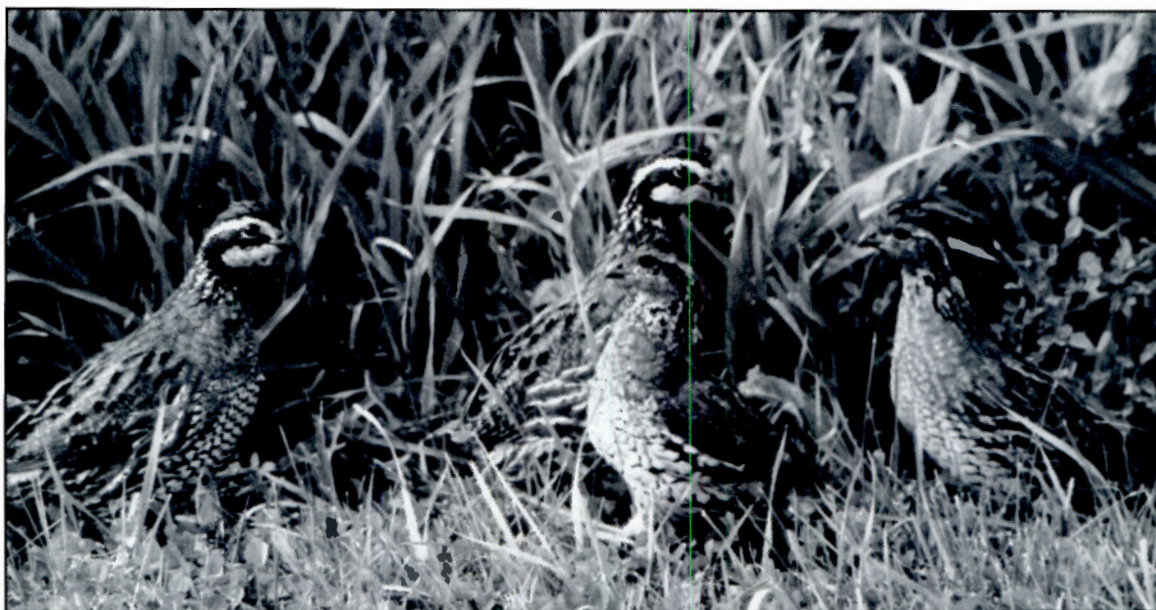
E.A.: 15 Aug., Sanganois C.A. (Mason Co) (EC); 16 Aug., Fairmount (Vermilion Co) (JS); 26 Aug., Chi (DM). M.C.: 5, MS, 21 Aug. (WS). L.D.: 24 Oct., Chi (JL); 7 Oct. (imm.), Sang.L (DB).

Willet

E.A.: 3 July, Rend L (TF, JD, DKa); 10 July, LChau (KR). L.D.: 13 Sep., Chi (DM).

Northern Bobwhite

M.C.: 14, Sangamon Co., 29 Oct. (DB); 12, Carl.L, 17 Oct. (KM); 10, DPCA, 20 Oct. (JM).



A covey of Northern Bobwhites at Des Plaines Conservation Area, Will Co., 5 October 1992. Photo by Joe B. Milosevich.

Peregrine Falcon

E.A. (very early dates probably unattached summering birds): 1 July, Spfld (DB); 1 Aug., Chi (KH); 22 Aug. (ad, race probably anatum), Mount Vernon (Jefferson Co) (RC); 19 Sep., Rend 1 (TF). L.D.: 28 Nov., Chi (JL); 19 Nov., East St. Louis (KM). Others: 16 others in northern Illinois, 7 others in central Illinois, and 1 other in southern Illinois reported.

Prairie Falcon

E.A.: 22 Nov., Urbana (RC).

Wild Turkey

M.C.: 10, Spoon L (Knox Co), 25 Sep. Others: 15 Nov., Ottawa (CWa, JMc).

Common Moorhen

M.C.: 20, LCal, 6 Sep. (JM). L.D.: 11 Oct. (6), LCal (JL).

Yellow Rail

L.D.: 26 Nov., Clark Co (SSi—seen and subsequently taken by

American Coot

E.A.: 6 Aug., HLCA (KM); 31 Aug. (2), Sang.L (DB). M.C.: 3,000, Braidwood, 14 Oct. (JM); 1000+, Clin.L, 17 Oct. (RP); 500, HLCA, 29 Oct. (KM). L.D. (north): 3 Dec. (4), Joliet (JM).

Sandhill Crane

E.A.: 4 Oct. (24), Boone Co (AB). M.C.: 2,185, CBG, 13 Nov. (LB); 1,870, IBSP, 13 Nov. (EW et al.). L.D.: 28 Nov. (76), West Chicago (MS); 17 Nov. (5), Ullin (Pulaski Co) (JD, TF). Others: 11 July - 28 Sep. (apparently summering birds), McHenry Co (DF).

Black-bellied Plover

E.A.: 1 Aug. (5), LCal (AS); 15 Aug. (imm.), LCal (JL); 23 Aug. (5), Rend L. (m.ob.). M.C.: 51, LCal, 23 Aug. (JL); 14, LChau, 7 Nov. (LA); 11, Rend L, 19 Oct. (TF, JD). L.D.: 14 Nov. (imm.), Chi (RH, EW); 13 Nov., LChau (KR); 8-9 Nov. Charleston (BH).